

# Multi colored labels

Thermal Printing and Vinyl Cutting Technology

Label & Sign Printing Machine

## CPM-100E



**INDOMAX**

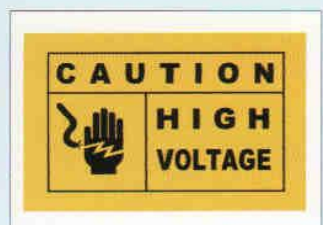
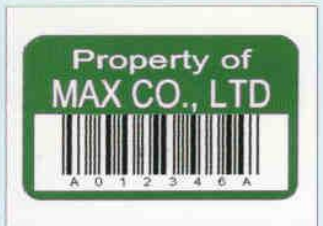
# Whatever you want.... and whenever you want !!!

## About Indomax

INDOMAX is a part of Automag group of companies based in Pune, India. INDOMAX has been started with an objective to offer technology oriented innovative products to the Indian industry. INDOMAX offers products useful for the industries, who are manufacturers or users of Electrical Controls and Systems. The products offered by INDOMAX are manufactured by the International Leaders in their respective fields. Electronic Ferrule Printing Machines from MAX, Japan are the main products offered by INDOMAX. Our customer list speaks for itself about the utility of these products in different market segments. With its Head Office in Pune, branch offices at Delhi & Bangalore and countrywide dealer network in important cities, customer is assured of the quick response and continuous support to their all needs.

## CPM-100E

INDOMAX, now introduces in India the innovative product CPM-100E, a label and sign printing machine manufactured by Max Co.Ltd, Japan. The CPM-100E combines thermal printing and vinyl-cutting technology. Together with the dedicated MAX software, you can print multi-colored labels and signs in any shape you want !





## Standard Supplies for CPM-100E



Beepop Sheets  
MAX exclusive perforated vinyl sheet  
Available colors  
Color Sheets



Beepop Ink Ribbons  
MAX exclusive Ink Ribbons  
Available colors

### PET Sheets

Black
White
Red
Blue
Yellow
Green
Orange
Sky Blue
Gray
Lettuce Green
Cobalt Blue
Navy Blue
Amethyst
Chocolate

PET Hairlined Silver
PET White
PET Matt Silver
Fluorescent Sheets (Cutting only)
Fluorescent Red
Fluorescent Yellow
Fluorescent Green
Special Material Sheets (Printing only)
Reflective Sheet White
Clear Sheet
Paper Sheet
Phosphorescent Sheet (Unprintable)

Black
White
Red
Blue
Dark Blue
Green
Dark Green
Gray
Orange
Black Ribbon for Paper
Clear (Abrasion Guara)

Package: 4 Rolls per carton  
Size: 4" - 3/4 x 164" (120mmx50m)

Package: 4 Rolls per carton  
Size: 4" - 3/8 x 32- 13/16", (110mmx10m)

### Product Specifications

Product	CPM-100E	
Printer Section	Printing Method	Thermal Transfer
	Print Resolution	200 dpi
	Printing Speed	1.0" (25mm) / Sec at standard 0.5" (12.5mm) / sec for high quality
Cutter Section	Resolution	0.001" (0.025mm) / Step
	Cutting Speed	4.7" (120mm) / Sec at maximum
Maximum Output Range	4" (100mm) x 78.7" (2000mm)	
Interface	USB:USB 1.1, allowable cable length 78.7" (2M) Parallel : compliant with IEEE 1284, allowable cable length 78.7" (2M)	
Working Environment	Temperature: 10-35° C (50-96° F) Humidity: 35-80% (No dew condensation allowed)	
Power Source	AC 100 - 240 V 50/60 Hz 1A	
Power Consumption	150 W at maximum, 20W at stand by	
Outer Dimensions	12.8" (325mm) x 12.0" (305mm) x 12.4" (315mm) (W) x (D) x (H)	
Weight	19.8 lbs (9kg)	

### Recommended PC Requirements

DOS-V machines with the following conditions:

- CPU: Intel Pentium 150 MHZ or better
- Memory : 64MB or better
- Free spaces of HDD : 100 MB or better
- CD-ROM Drive
- OS : Windows Vista / XP / 2000  
Windows Me / 98 SE / 98 compatible drivers / applications are available by downloading from MAX website
- Interface : Parallel (Centronics), USB (version 1.1)

Windows is registered trademark of Microsoft Corporation (US) in USA or in other countries.  
Pentium is a registered trademark of Intel Corporation (US) in USA or in other countries.

Contents  
CPM-100E, AC Cable, Blade, Tweezers, Squeegee, Tool Holder, Tool Holder Replacing Spanner, Application Software CD, Instruction Manual

*The specifications and design in this catalogue of this product will be subject to change without advance notice due to our continuous efforts to improve the quality of our products.*

Distributor:

## INDOMAX

3C, Behere Arcade, Plot No. 42B, Prabhat Road, Opp. Prabhat Police Chowki, Pune 411 004  
Tel: +91 20 25458662 Fax: +91 20 25458663  
Email: indomax@vsnl.net Website: www.indo-max.com

**MAX**  
MAX CO.,LTD.

6-6, NIHONBASHI  
HAKOZKI-CHO, CHUO-KU, TOKYO, JAPAN  
PHONE: 81-3-3669-8131 FAX: 81-3-3669-7104  
Web: <http://www.max-ltd.co.jp/int/>